



# WISE

The new generation

Health and comfort  
- Simple and energy efficient

**Swegon**<sup>i</sup>

# Easy to get it right

Demand-controlled ventilation is the best way to achieve a healthy and comfortable indoor climate, while keeping energy consumption down to a minimum. The new generation of Swegon's WISE system takes this to a new level. Now, we're not only bringing ventilation under demand control, but indoor climate as a whole. Based on 15 years of experience, we have created our 'blue-sky' system, in which each component is designed to interact with the others – basically, a system built to be built.

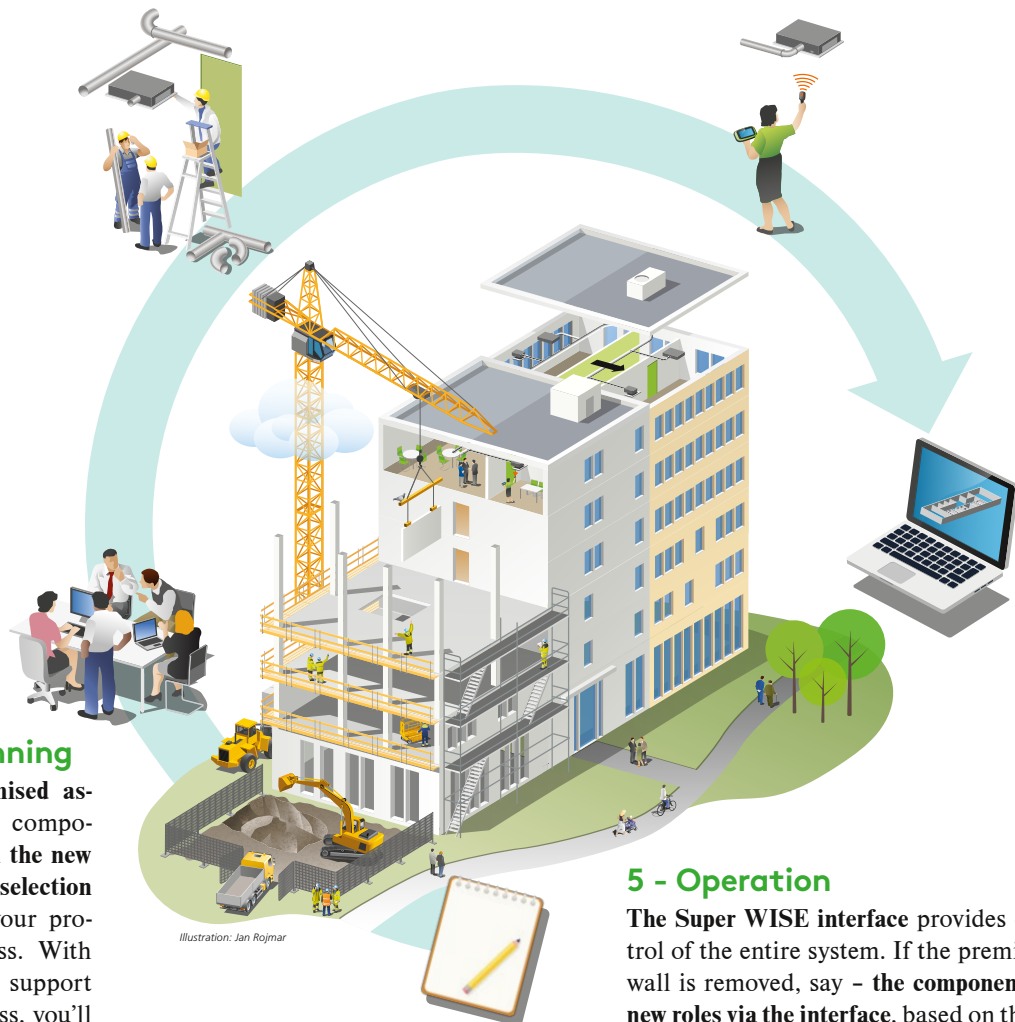
**Simple, reliable and dependable are the keywords, throughout the construction process!**

## 3 - Installation

**Wireless communication** between the products significantly reduces installation time and **eliminates the risk of misconnections**. The products do not need to be factory-preconfigured – simply install the right type of product in the right location.

## 4 - Commissioning

Once the system's integral components have been installed, their QR codes are scanned and then **digitally matched** with the role they assume in the system. The first time the system is started, each component is **configured automatically**, which saves time and reduces the risk of human error.



## 2 - Project planning

A refined and **optimised assortment** of system components combined with **the new IC Design product selection software** simplifies your project planning process. With visual and powerful support early on in the process, you'll be saving a lot of time further along in the project.

## 5 - Operation

**The Super WISE interface** provides oversight and control of the entire system. If the premises are altered – a wall is removed, say – **the components can be assigned new roles via the interface**, based on the new parameters.

## 1 - System selection

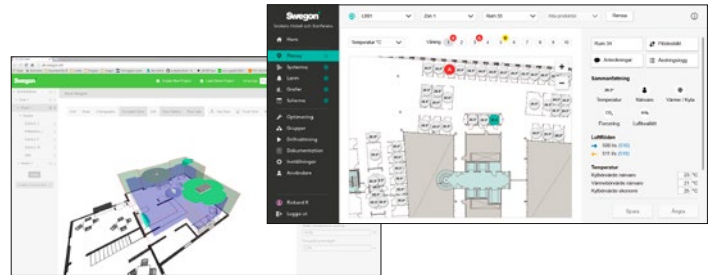
Swegon's **extensive product range** makes it easy, right from the concept stage, to determine which solution works best. Air, water or both? We give you all the options, along with **Swegon ESBO – early stage building optimisation** – to give you great decision-support from Day One.

# The new generation

In rebuilding our WISE system from scratch, we've taken the opportunity to incorporate a raft of smart new solutions. Now let's sum up what's new:

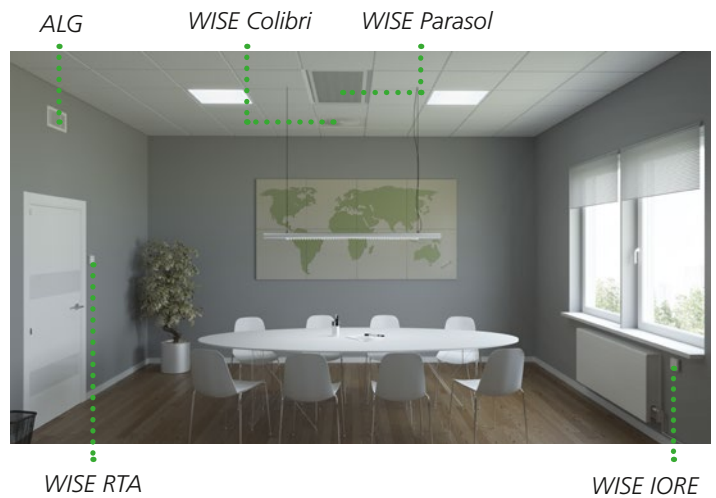
## Visual

Visual usability was one of our missions in developing the new-generation WISE. This is especially true of the new Super Wise, in which the whole system can be monitored at a glance. But it starts right from the IC Design product selection software in which Advanced Room View aids product selection with its superb visual support. Faster, easier and more enjoyable to use!



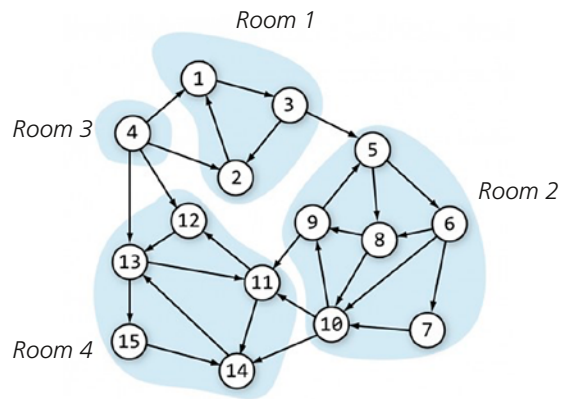
## Versatile

Thanks to the depth of our product range and the built-in flexibility of both our products and software, you'll always be able to find the ideal WISE solution to give you a healthy indoor climate with the least possible energy consumption. For offices, schools, hotels and any other application, we have air- and waterborne products for directing ventilation, heating and cooling to wherever it's needed.



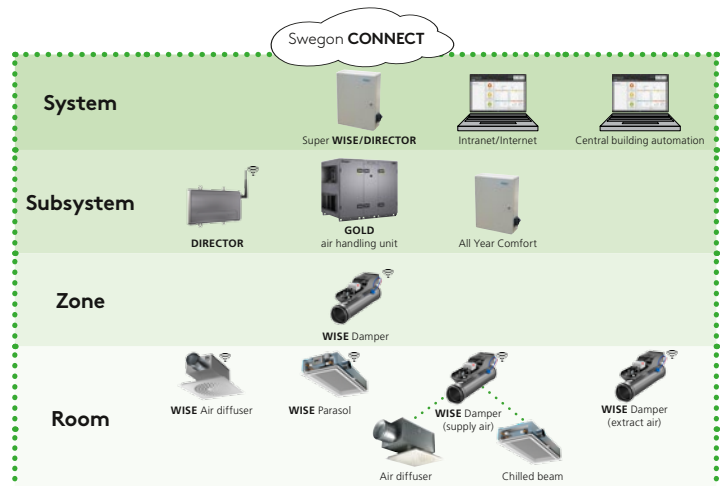
## Wireless

Communication within the system is not based on cabling that might get misconnected initially and later be vulnerable to damage. Instead, we use state-of-the-art wireless technology in a patented and extremely reliable solution that networks our products. Combined with high-level encryption for secure data transmission, this results in a robust system, which still allows unbeatable flexibility to suit a multitude of different applications.



## Comprehensive

A complete system that can be expanded with other Swegon products for added functionality. The GOLD air handling unit provides high-efficiency ventilation and offers full compatibility, including its control features. Add the Swegon Connect cloud service to link up to monitoring and support.



We make every breath count.

EN-WISE 2017-02-08

**Swegon**<sup>®</sup>